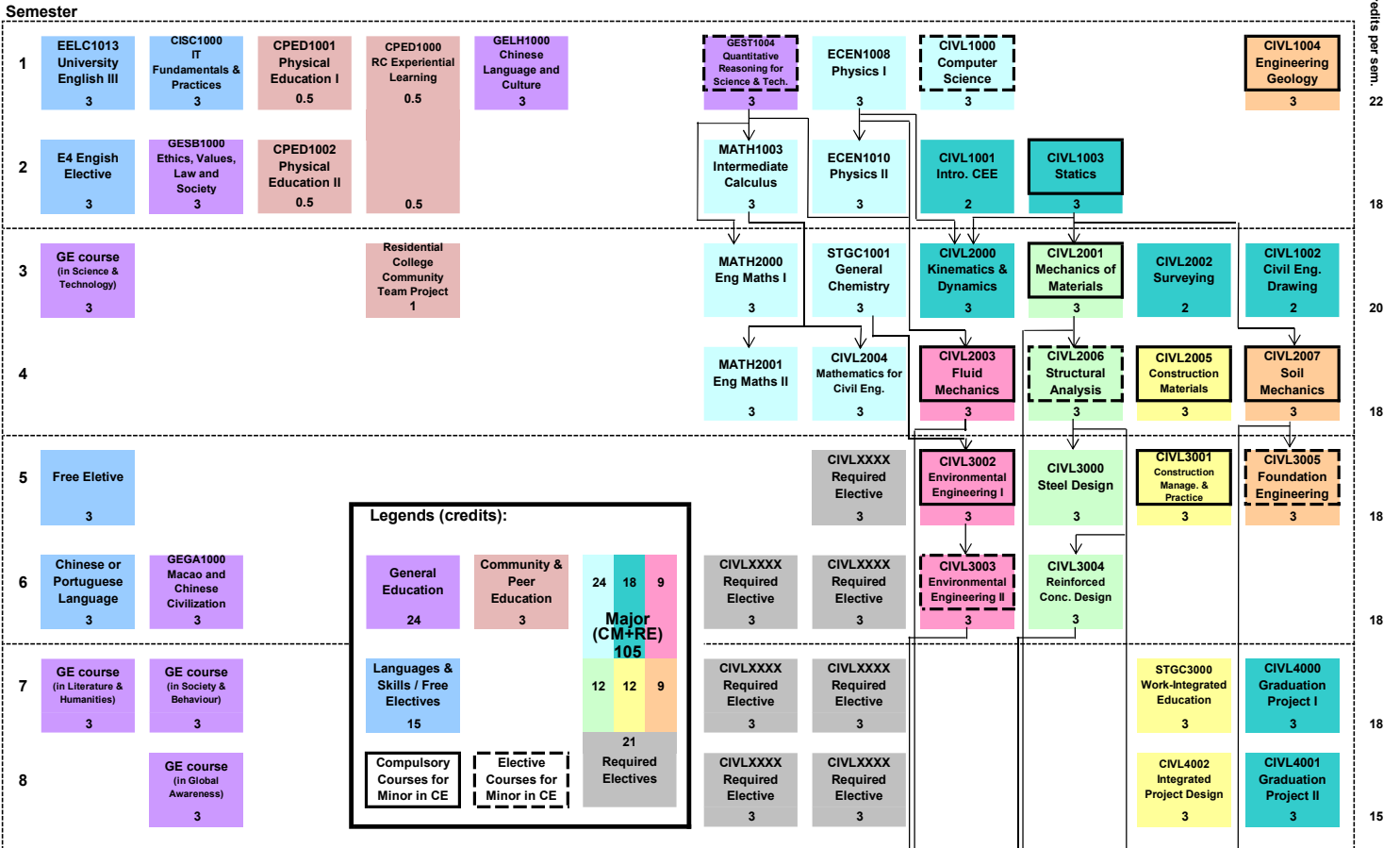


CE Programme Course Structure (2021/2022) - E3



List of Required Elective Courses

Elective Course Requirement for Registration onto Scheme "A".

Logistics & Transportation (LTE discipline)

Students must have completed both CIVL4019 & CIVL4020.

Geotechnical (GEL discipline)

Δ Students must have taken either one of the elective courses (CIVL4010 or CIVL4011), or a project involving geotechnical design.

For details of the HKIE Engineering Graduate Training Scheme "A", please refer to the FST website (<https://www.fst.um.edu.mo/academics/accreditation/the-hkie-engineering-graduate-training-scheme-a/>)

